

# FLIGHT SIM PM

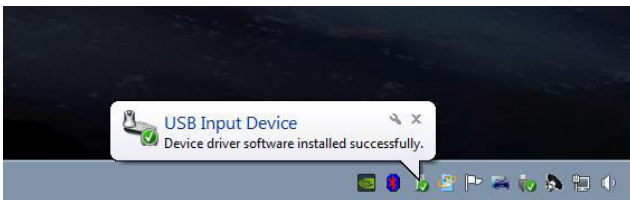
QUALITY FOR EVERY BUDGET



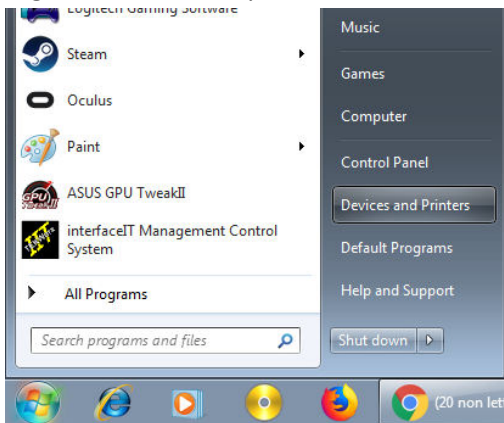
Most of the hardware is plug n play and it will work with all simulators (FS2004,FSX,P3D,X-plane)and addons like PMDG,Ifly,Quality Wings,Ifly etc.

We always recommend softwares like FSUIPC,Prosim,LINDA since the default configuration menus are very limited for this type of hardware.

1.Connect FlightsimPM hardware to your computer and allow windows to recognize the new usb card



2. go to Devices and printers



3. select your new hardware and click Game controller settings/properties test all the switches/pushbuttons/axis on your hardware to make sure everything works as it should

