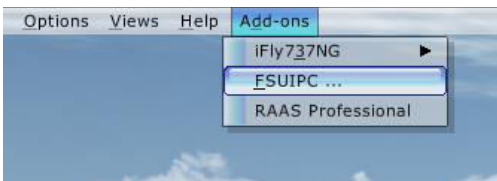


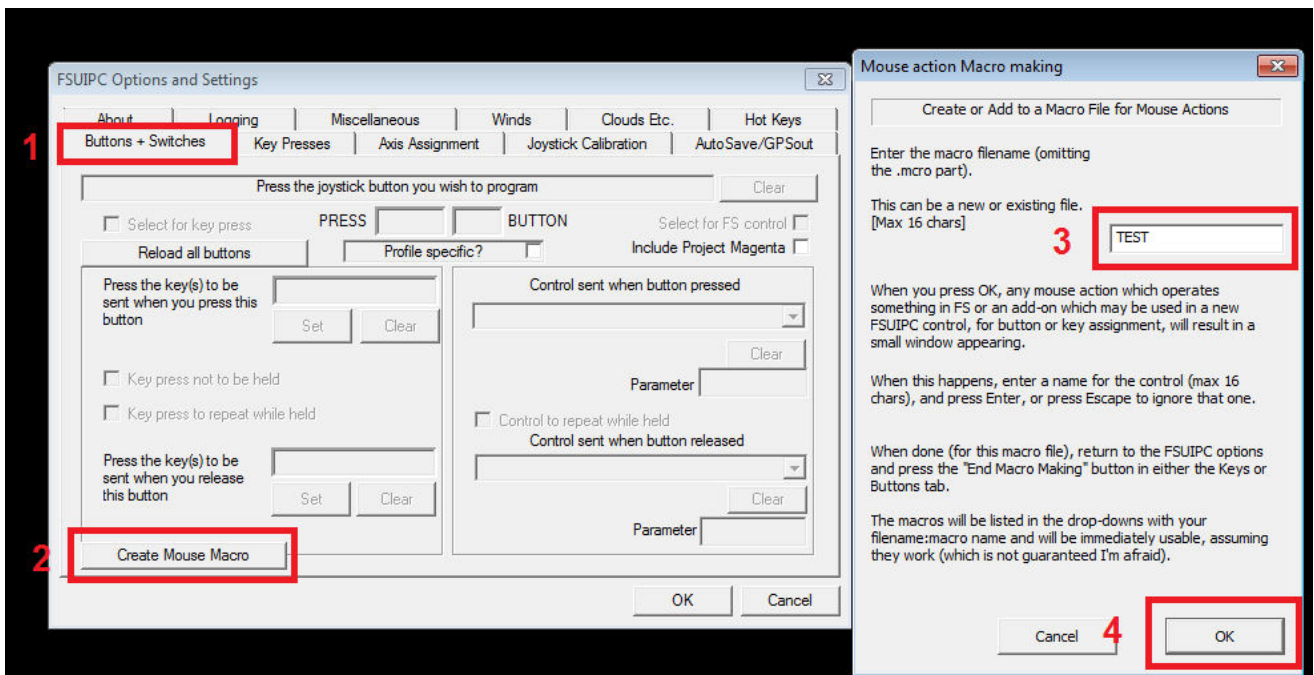
## How to create Macro Mouse inputs trough FSUIPC

This works with FSX and P3D and very useful with PMDG and other addons since in the FSUIPC menu you might not find the inputs needed to configure your hardware

- you need FSUIPC registered version always recommended latest version
- open FSX or P3D
- go to addons and select FSUIPC



1. FSUIPC go to buttons and switches
2. Create Macro Mouse
3. as optional write a name for what addons is your input .in this case i will write TEST
4. click ok

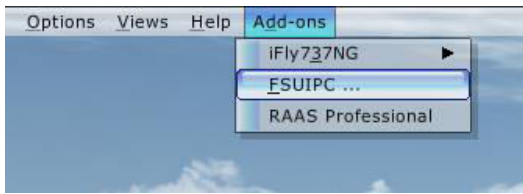


- In your airplane cockpit

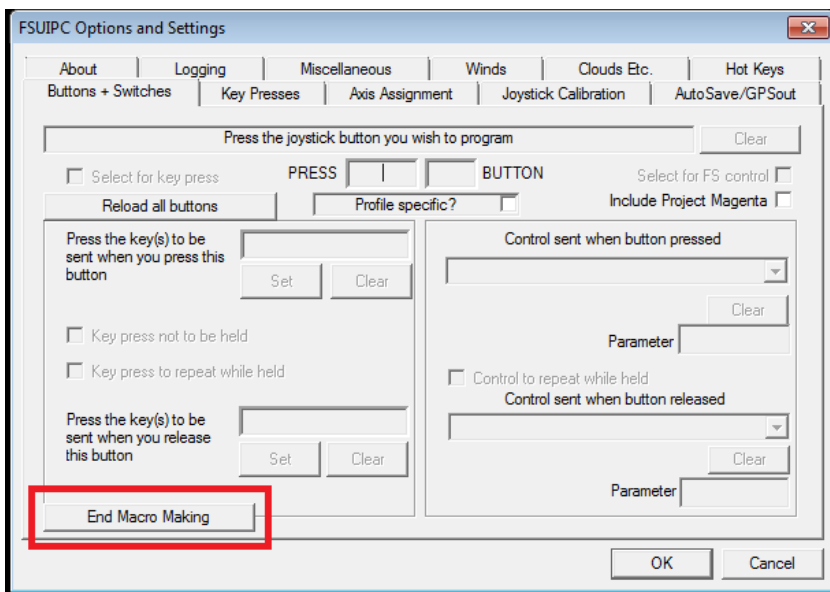
1. click the switch/pushbutton you want in my case WXR EFIS
2. write what the input is for
3. press enter



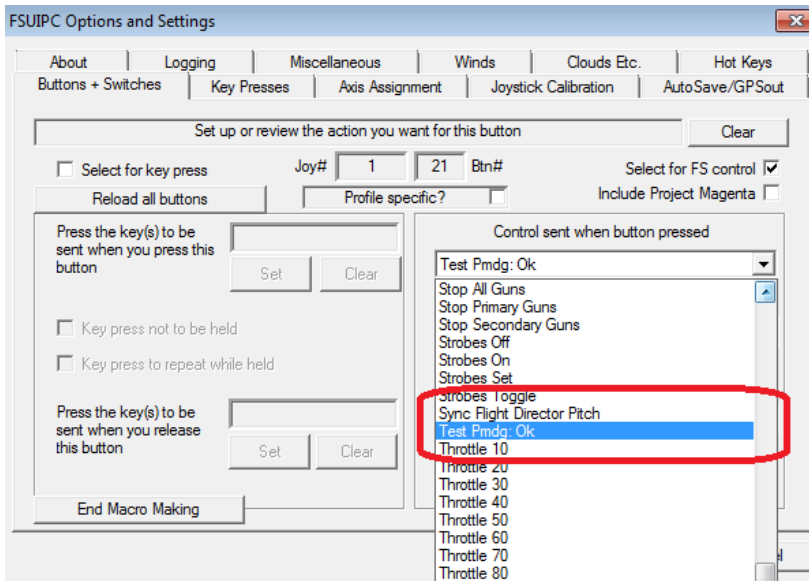
- Go back to FSUIPC



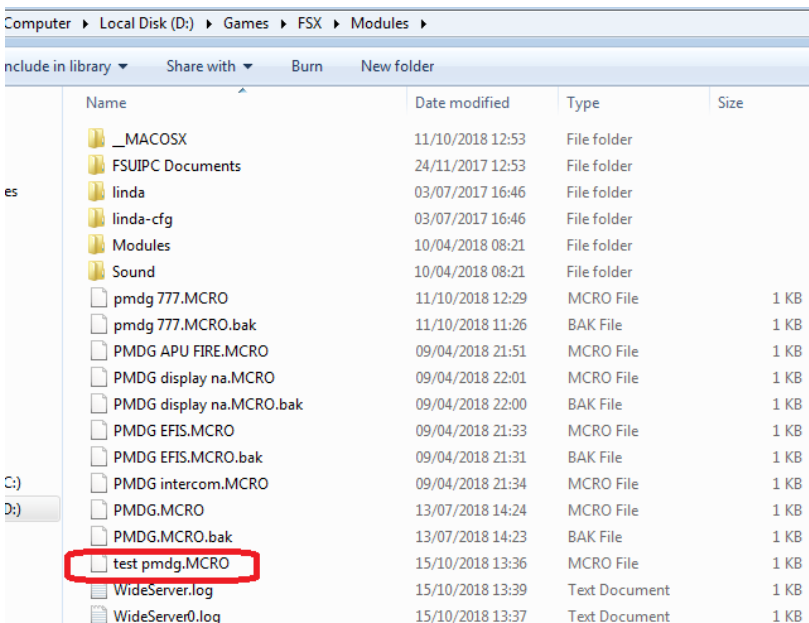
- End Macro Making



Now your custom input is done and you can find it in your FSUIPC inputs menu

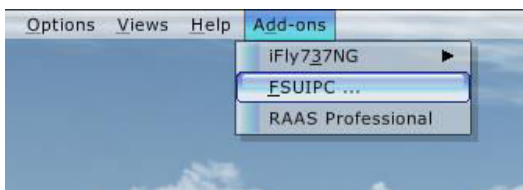


All the macro inputs will be saved in your FSX/P3D modules folder in case you need to copy/paste or save it for different reasons



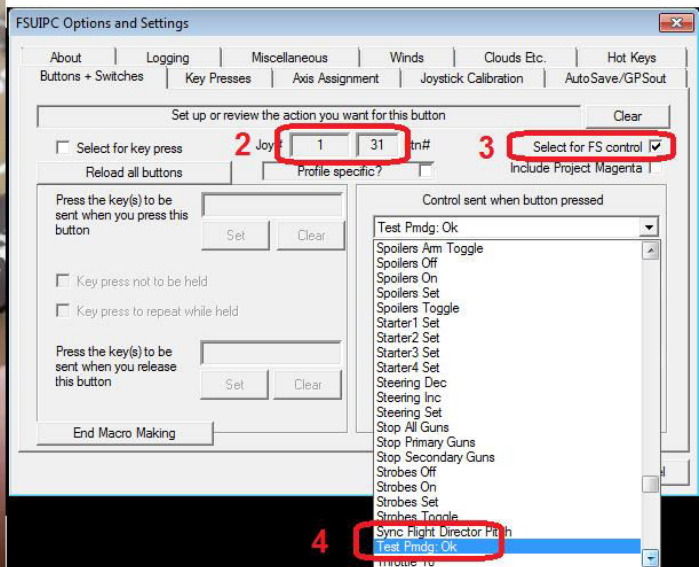
### How to assign Macro Mouse input to your hardware

Connect your hardware to your pc open FSX/P3D and go to FSUIPC



Select buttons and switches

- 1.trigger the pushbuttons/switch on your hardware that you want to configure with your new macro mouse input you have created
- 2.as soon you trigger the pushbutton/switch on your hardware FSUIPC should recognize it as a number
- 3.select for FS control
- 4.select the new input you created in my case "test pmdg ok"
- 5.press ok



5.press ok

Go back to you cockpit and test out the new inputs

